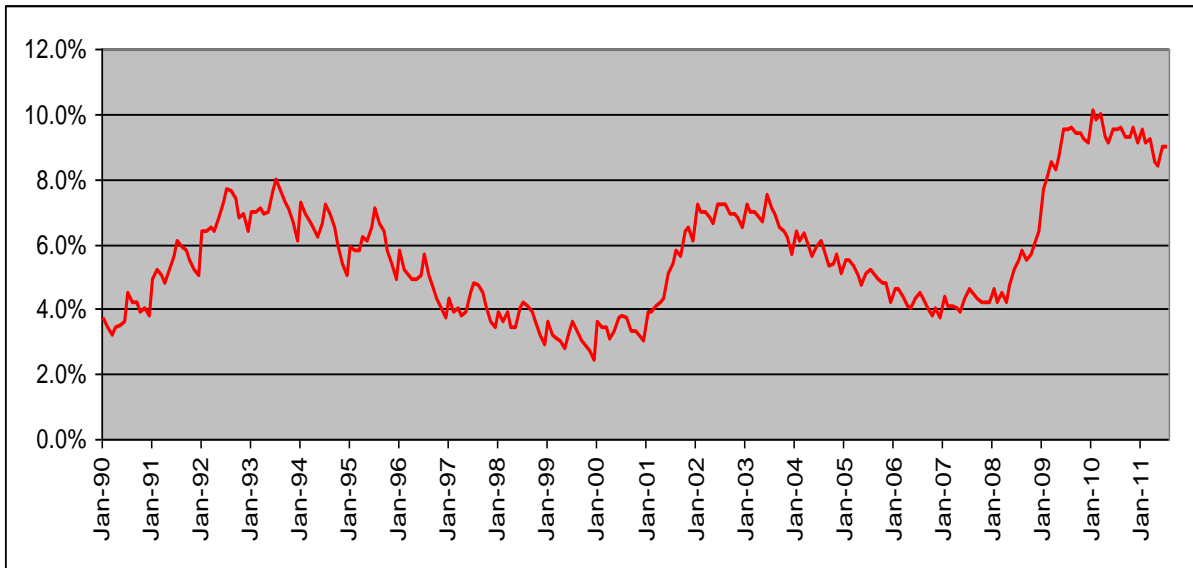


# Labor Market Information

**Unemployment Rate Historical Trend from 1990 to 2011**  
San Francisco County



## Current Employment Highlights

San Francisco Metropolitan Area

**Between August 2010 and August 2011**, the total number of jobs in the West Bay rose by 7,600 jobs, or 0.8 percent.

Professional and business services posted a net gain of 8,100 jobs. Computer systems design and other professional, scientific, and technical jobs expanded by 8,900 jobs, more than offsetting slight decreases in other detailed industries.

Private educational and health services increased by 2,700 jobs, with just over half of the additions in the health component.

Leisure and hospitality netted 2,100 jobs. A gain in food services and bars more than offset a cutback in arts, entertainment, and recreation.

On the other hand, trade, transportation, and utilities lost 4,400 jobs, nearly all in retail trade.

## Current Industry Employment San Francisco Metropolitan Area

Industry	Jul-2011	Aug-2011	Change		Aug-2010	Aug-2011	Change
	Revised	Prelim				Prelim	
Total, All Industries	939,000	947,300	8,300		939,700	947,300	7,600
Total Farm	2,500	2,500	0		2,600	2,500	(100)
Total Nonfarm	936,500	944,800	8,300		937,100	944,800	7,700
Mining and Logging	200	200	0		300	200	(100)
Construction	31,900	32,300	400		32,700	32,300	(400)
Manufacturing	38,100	37,600	(500)		37,900	37,600	(300)
Trade, Transportation & Utilities	143,000	143,400	400		147,800	143,400	(4,400)
Information	38,800	38,700	(100)		38,500	38,700	200
Financial Activities	76,700	76,800	100		77,100	76,800	(300)
Professional & Business Services	207,400	210,000	2,600		201,900	210,000	8,100
Educational & Health Services	106,300	106,900	600		104,200	106,900	2,700
Leisure & Hospitality	126,200	128,100	1,900		126,000	128,100	2,100
Other Services	37,700	38,100	400		37,800	38,100	300
Government	130,200	132,700	2,500		132,900	132,700	(200)

Additional data are available online at <http://www.labormarketinfo.edd.ca.gov/>

